

ATTACHMENT A

ARCHITECTURAL PLANS

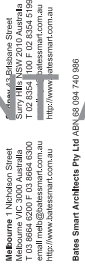
**UNITS 39-41 - 1A COULSON STREET
ERSKINEVILLE**



Check all dimensions and the conditions prior to commencement of any work, the purchase or ordering of any materials. If not, then, services or equipment and the preparation of shop drawings and the fabrication of

B	02.03.14	Crossover amended	DS	MA
---	----------	-------------------	----	----

Year	Development Application	AE	INSA
2007	1	1	1
2008	1	1	1
2009	1	1	1
2010	1	1	1
2011	1	1	1
2012	1	1	1
2013	1	1	1
2014	1	1	1
2015	1	1	1
2016	1	1	1
2017	1	1	1
2018	1	1	1
2019	1	1	1
2020	1	1	1
2021	1	1	1
2022	1	1	1
2023	1	1	1
2024	1	1	1
2025	1	1	1
2026	1	1	1
2027	1	1	1
2028	1	1	1
2029	1	1	1
2030	1	1	1
2031	1	1	1
2032	1	1	1
2033	1	1	1
2034	1	1	1
2035	1	1	1
2036	1	1	1
2037	1	1	1
2038	1	1	1
2039	1	1	1
2040	1	1	1
2041	1	1	1
2042	1	1	1
2043	1	1	1
2044	1	1	1
2045	1	1	1
2046	1	1	1
2047	1	1	1
2048	1	1	1
2049	1	1	1
2050	1	1	1
2051	1	1	1
2052	1	1	1
2053	1	1	1
2054	1	1	1
2055	1	1	1
2056	1	1	1
2057	1	1	1
2058	1	1	1
2059	1	1	1
2060	1	1	1
2061	1	1	1
2062	1	1	1
2063	1	1	1
2064	1	1	1
2065	1	1	1
2066	1	1	1
2067	1	1	1
2068	1	1	1
2069	1	1	1
2070	1	1	1
2071	1	1	1
2072	1	1	1
2073	1	1	1
2074	1	1	1
2075	1	1	1
2076	1	1	1
2077	1	1	1
2078	1	1	1
2079	1	1	1
2080	1	1	1
2081	1	1	1
2082	1	1	1
2083	1	1	1
2084	1	1	1
2085	1	1	1
2086	1	1	1
2087	1	1	1
2088	1	1	1
2089	1	1	1
2090	1	1	1
2091	1	1	1
2092	1	1	1
2093	1	1	1
2094	1	1	1
2095	1	1	1
2096	1	1	1
2097	1	1	1
2098	1	1	1
2099	1	1	1
2100	1	1	1

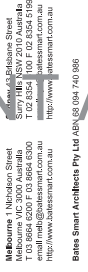


**Fridcorp Eve3
Coulson St Erskineville**
Apartment Building
Proposed Level 2 - 4 Plan

Scotch	1:100 on A1, 1:200 on A3
Dye	SV
Project No.	MA
Status	S11780
File Date	DEVELOPMENT APPLICATION
File Name	3010102014_1209038.PM
Drawing No.	11780-1780-11780_Memory_ave500_makindofplan.DWG
	Revision

All drawings may not be reproduced or distributed without prior permission from the architect.

	Ranking Date	Description	Initial	Closed
A - 38.10.14	Development Application	DS MA	Initial	Closed
	Ranking Date	Description		



**Fridcorp Eve3
Coulson St Erskineville**
**Apartment Building
Proposed Level 5 Plan**

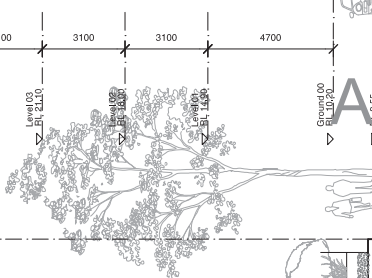
Check all drawings and the conditions prior to commencement of any work, the purchase or ordering of materials, the design, plant, services or equipment and the preparation of any drawings and/or the fabrication of any components.

Any drawings that are not to scale should be marked "not to scale drawings" - refer to flatter drawings only. Any drawings should immediately be referred to the architect for clarification.

Drawings may not be reproduced or duplicated without prior permission from the architect.

[illegible]





EXISTING
WAREHOUSE

STREET

[illegible]

McBourne 1 Nicholson Street
 Adelaide SA 5000 Australia
 Tel: 08 8252 5200 Fax: 08 8252 5300
 Email: info@batesmart.com.au
 Http://www.batesmart.com.au

Bates Smart Architects Pty Ltd AEN 68 094 740 986

BATESSMART
 IN

DA7.10[A]



Elevation Material Legend:	
BH	Metl palissade ballustrade/fencing/gates
BR1	Low profile brickwork (A: white, B: sand)
BR2	Coloured Glazed Brickwork
CO	Concrete planter walls
GC	Colour back glass
GF	Fixed glass
GL	Glass louvres
GO	Operable glazing
GT	Textured glass
LV	Operable elliptical louvers
MC	Textured metal cladding (A: nickel colour)
MH	Metal hood to window
MW	Metalwork in paint finish
PN	White Rendered Spandrels

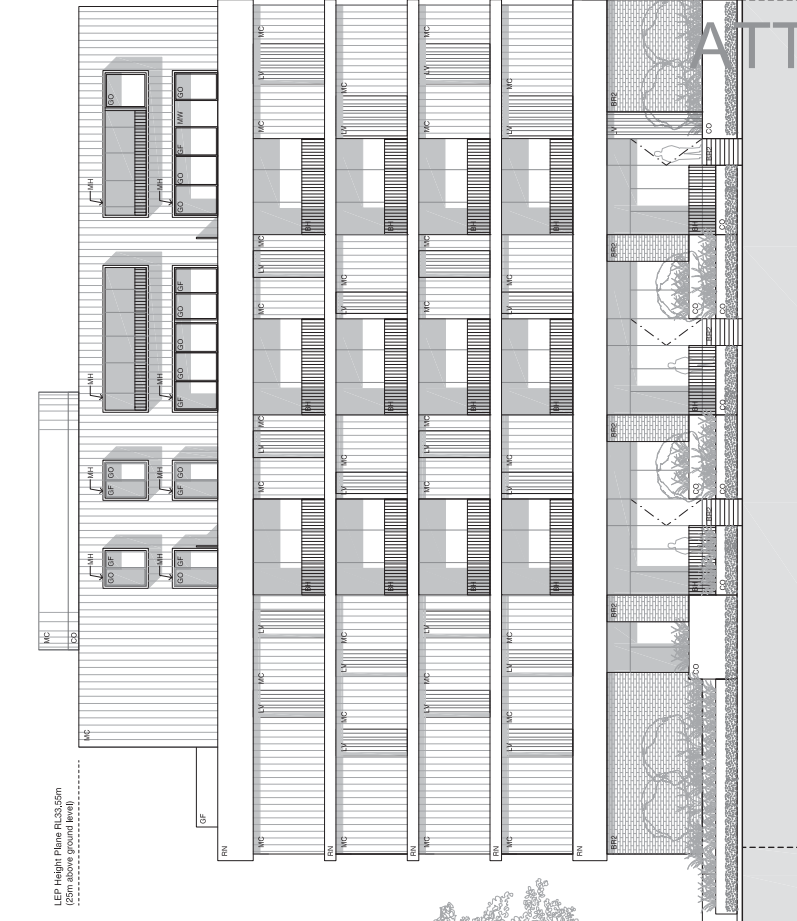
Check all functions and the conditions (refer to correspondence of dry work, the purchase or custody of any materials, lifting, placing, unloading or equipment and the frequency of shop drawings and/or the fabrication of any components.

Referring to the need by contractors with a professional background and their consulting documents. Do not make drawings - make it based drawings only. Any correspondence shall immediately be referred to the architect for final decision.

It is the contractor's duty to be responsible for the design and construction of the project from the architect.

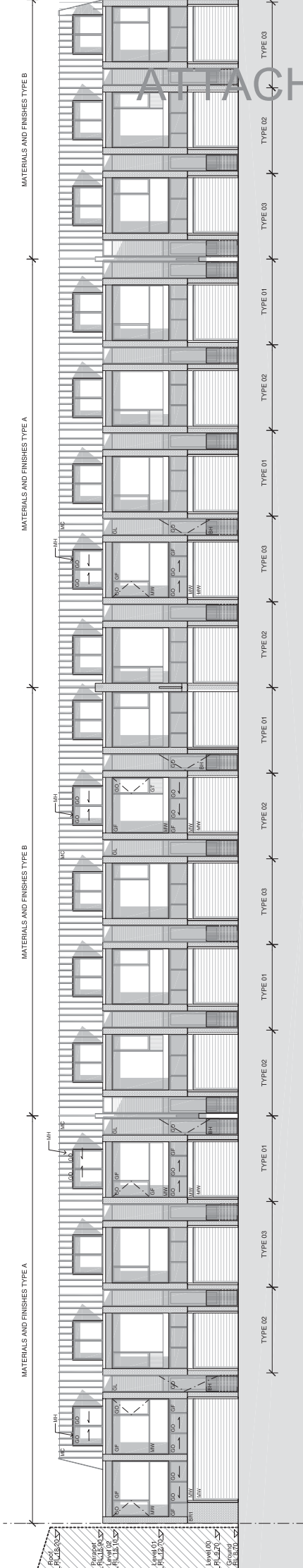
	A	04.11.14	Development Application	MC	MA
<hr/>					
<hr/>					

Drawing No. DA7 12[R] [Revision]





1 South Elevation - Terraces 1:100



1 North Elevation - Terraces 1:100

- Elevation Material Legend:**
- BH Metal polycarbonate balustrade/finishing glazes
 - BR1 Low profile brickwork (A: white, B: sand)
 - CL Concrete cladding/finishing glazes
 - CO Concrete planter walls
 - GC Colour back glass
 - GF Fixed glazing
 - GO Operable glazing
 - OT Textured glass
 - MC Textured metal cladding (A: nickel colour, B: bronze colour)
 - MH Metal hood to window
 - MW Metalwork in plan finish
 - RN White Reinforced Spandrel

Revision	Date	Description	Initial	Checked
B	02.03.15	Levels reduced, carports deleted, DS finalised	DS	MA
A	30.10.14	Development Application	MC	MA

Fridcorp Eve3 Coulson St Erskineville Terraces North and South Elevations		Scale: 1:100 on A1, 1:200 on A3	
Drawn	MC	Checked	MA
Project No.	S11780		
Status	DEVELOPMENT APPLICATION		
Plot Date	11/02/2015 11:08:59 AM		
Plot File	11/02/2015 11:08:59 AM		
Drawing No.	2001-2314		

Drawn by: [Name] and checked by: [Name]. This drawing is the property of Bates Smart Architects Pty Ltd. It is to be used only for the project and site for which it was prepared. It is not to be used for any other project or site without the written consent of Bates Smart Architects Pty Ltd. All rights reserved.